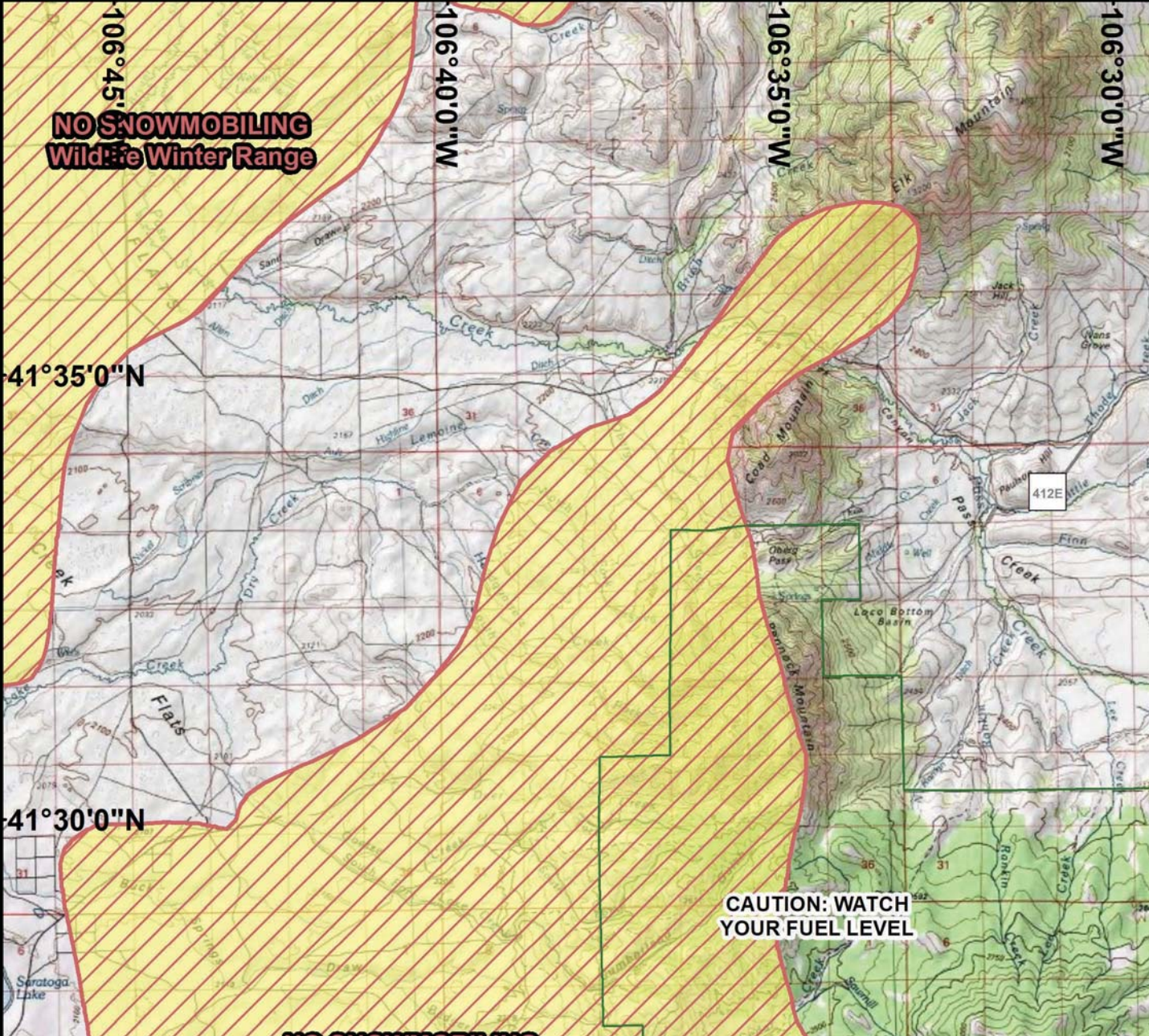


NO SNOWMOBILING
Wildlife Winter Range



106°45'0"W

106°40'0"W

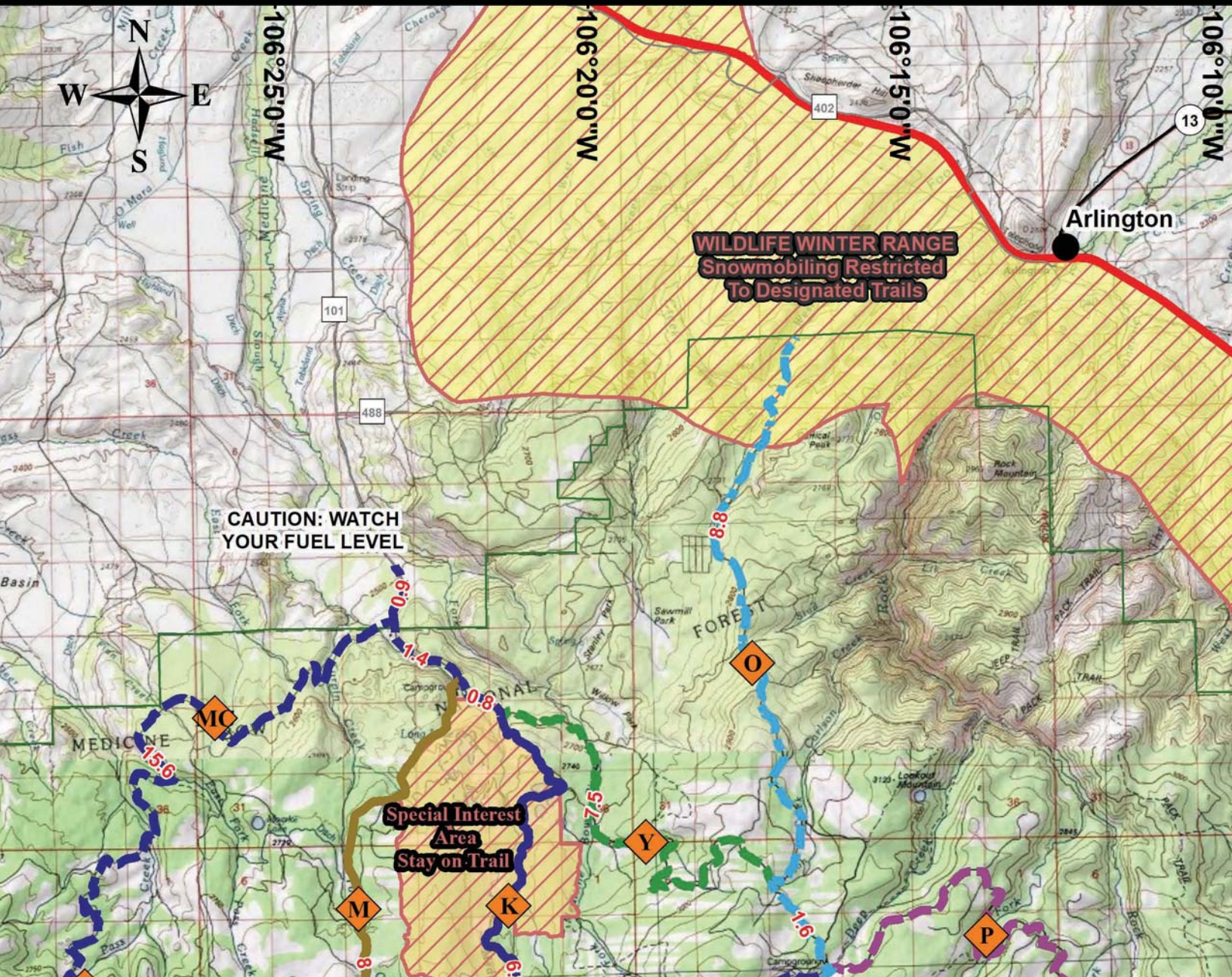
106°35'0"W

106°30'0"W

41°35'0"N

41°30'0"N

CAUTION: WATCH
YOUR FUEL LEVEL



Arlington

WILDLIFE WINTER RANGE
Snowmobiling Restricted
To Designated Trails

CAUTION: WATCH
YOUR FUEL LEVEL

**Special Interest
Area**
Stay on Trail

O

Y

M

K

P

8:8

6:0

1:4

0:8

15:6

8:1

1:6

106°25'0"W

106°20'0"W

106°15'0"W

106°10'0"W

402

101

488

13

FORETT

MEDICINE

NATIONAL

Arlington

402

101

488

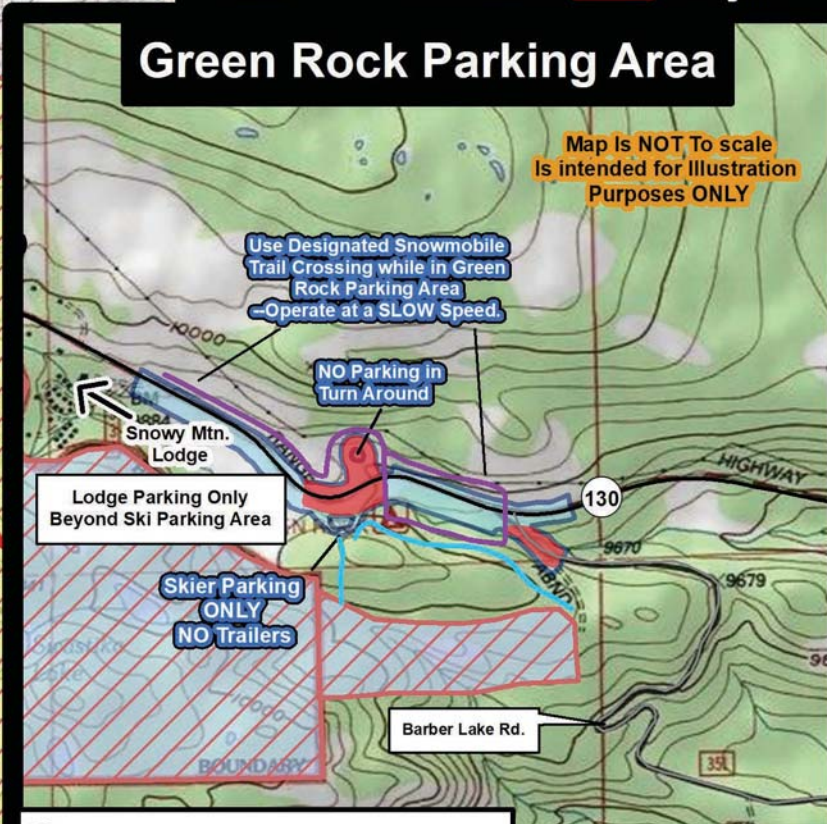
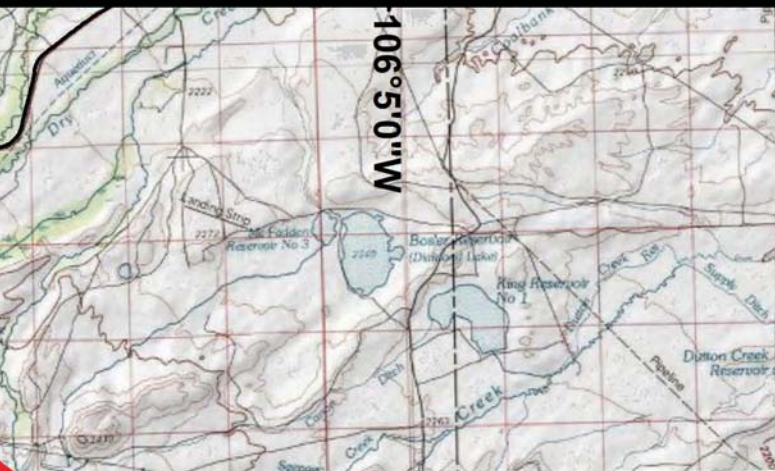
13

FORETT

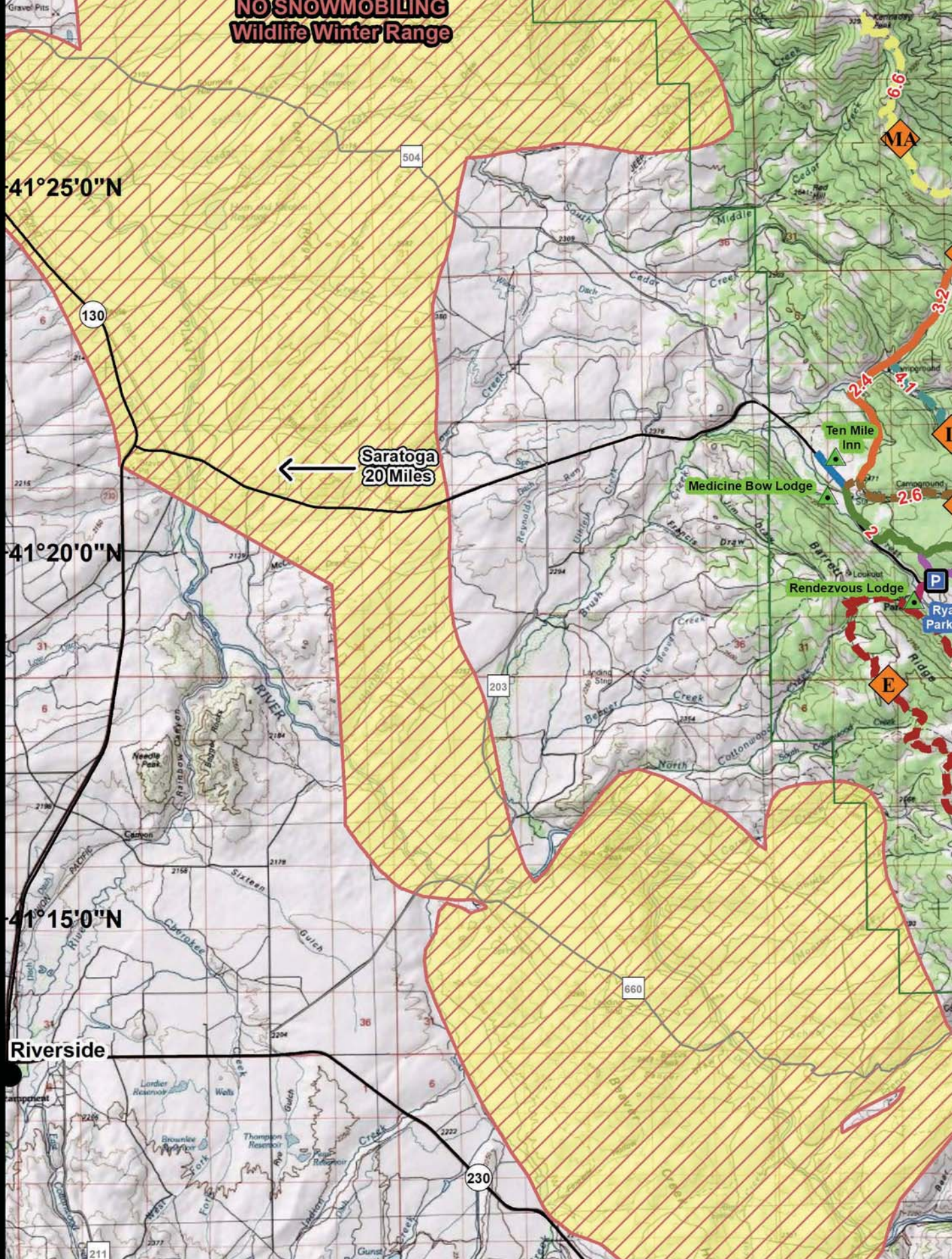
MEDICINE

NATIONAL

Arlington



NO SNOWMOBILING Wildlife Winter Range



41°25'0"N

41°20'0"N

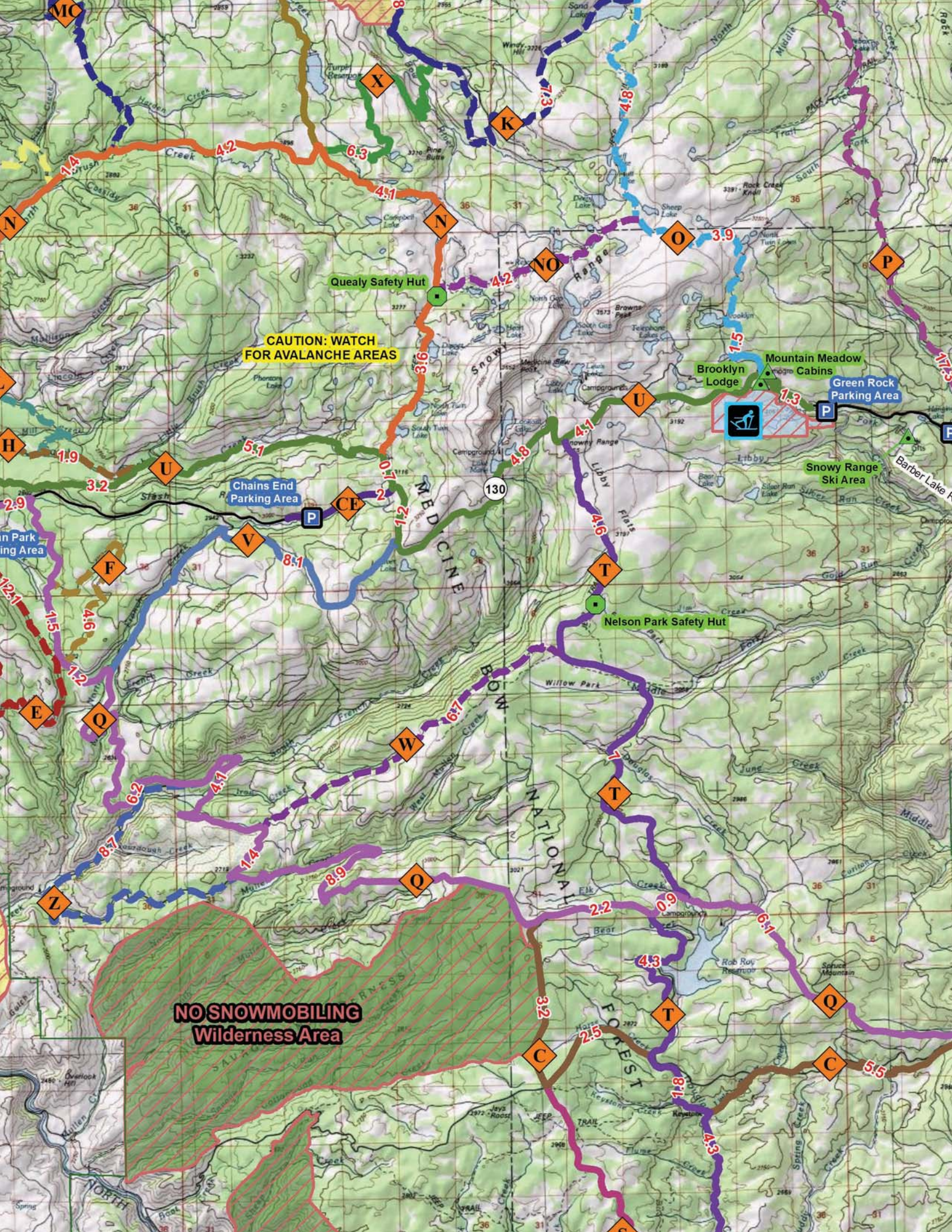
41°15'0"N

Riverside

← Saratoga
20 Miles

SNOWY RANGE

This trail system is maintained through cooperative efforts of the Wyoming Department of State Parks and Cultural



CAUTION: WATCH FOR AVALANCHE AREAS

NO SNOWMOBILING
Wilderness Area

Quealy Safety Hut

Nelson Park Safety Hut

Brooklyn Lodge

Mountain Meadow Cabins

Green Rock Parking Area

Chains End Parking Area

Snowy Range Ski Area

Barber Lake

MED CLINE

SNOWY RANGE

NATIONAL FOREST

FOREST

130

Please

- Operate at a SLOW Speed and be respectful of other users while in Parking Area.
- DO NOT park in turn-around, in the designated Skier Parking Area, or beyond the Turn-Around in the Lodge Parking Area.
- Be aware of vehicle traffic through the parking area and cross only at the crossing Designated at both ends of the parking area
- Pull off the Road as far as possible when parking along the roadway and DO NOT BLOCK Thru Traffic.
- Be Aware that skiers share this parking area, so be respectful, slow down when meeting on trails and pass with care
- Always operate with caution when leaving the Green Rock area since there are many users sharing the trails.

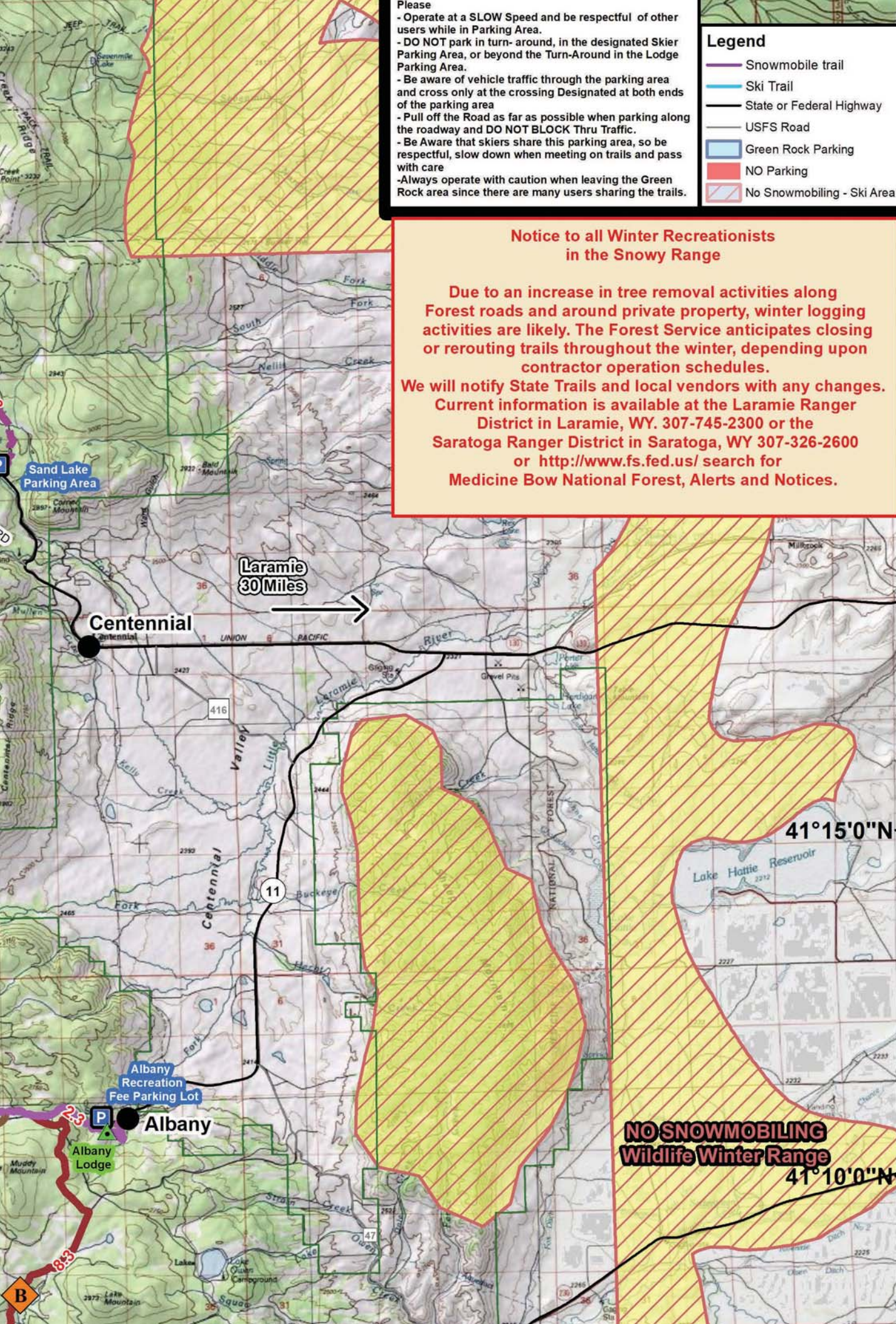
Legend

-  Snowmobile trail
-  Ski Trail
-  State or Federal Highway
-  USFS Road
-  Green Rock Parking
-  NO Parking
-  No Snowmobiling - Ski Area

Notice to all Winter Recreationists in the Snowy Range

Due to an increase in tree removal activities along Forest roads and around private property, winter logging activities are likely. The Forest Service anticipates closing or rerouting trails throughout the winter, depending upon contractor operation schedules.

We will notify State Trails and local vendors with any changes. Current information is available at the Laramie Ranger District in Laramie, WY. 307-745-2300 or the Saratoga Ranger District in Saratoga, WY 307-326-2600 or <http://www.fs.fed.us/> search for Medicine Bow National Forest, Alerts and Notices.



Laramie
30 Miles

Centennial

Albany
Recreation
Fee Parking Lot
Albany
Lodge

**NO SNOWMOBILING
Wildlife Winter Range**

41°15'0"N

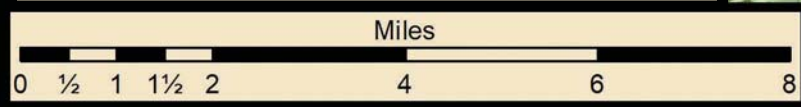
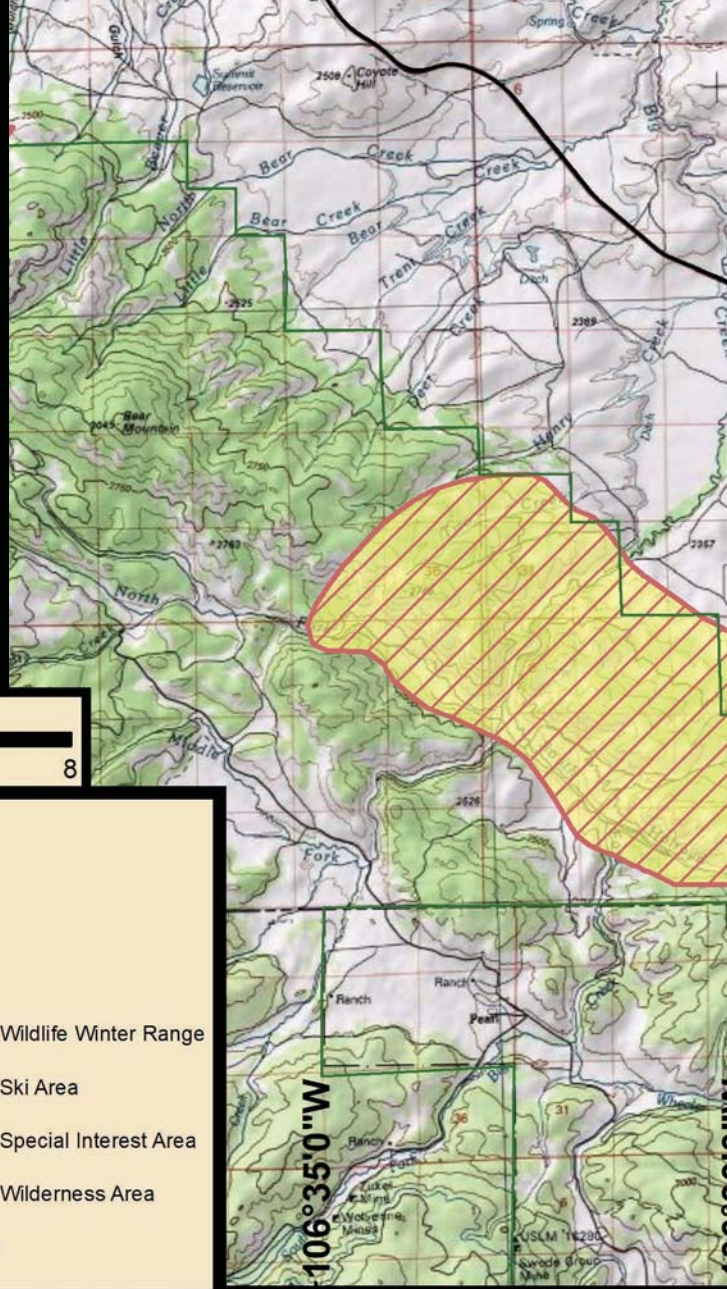
41°10'0"N

of the Wyoming Department of State Parks and Cultural Resources, Division of State Parks, Historic Sites & Trails; the U.S. Forest Service and local snowmobile clubs.

Full services are available in Laramie, Saratoga, Centennial and Rawlins. Limited facilities are available in the mountains. Guided tours/rentals are available in Laramie and on the mountain. Snow depths of 12 feet are possible.

Elevations: 7,000 feet to 11,000 feet
 Grooming Season: Mid-December through Mid-March, depending on snow conditions and funding
 Season Temps: +30 degrees F to -30 degrees F

TOTAL MILES: 324
GROOMED: 174
UNGROOMED: 150



Legend

	On-Trail Business or other point		County Road
	Parking Area		Forest Boundary
	City / Town	No Snowmobiling	
	Safety Shelter		No Snowmobiling - Wildlife Winter Range
	Groomed Trail		No Snowmobiling - Ski Area
	Ungroomed Trail		No Snowmobiling - Special Interest Area
	Interstate Highway		No Snowmobiling - Wilderness Area
	State or Federal Highway		Trail Length (Miles)

**NO SNOWMOBILING
Wilderness Area**

**Logging Operations
Possible
Roads 530, 898, 516, 512
512 S, 504
Trails R & AA Closed!!**

Mountain Home
Parking Area

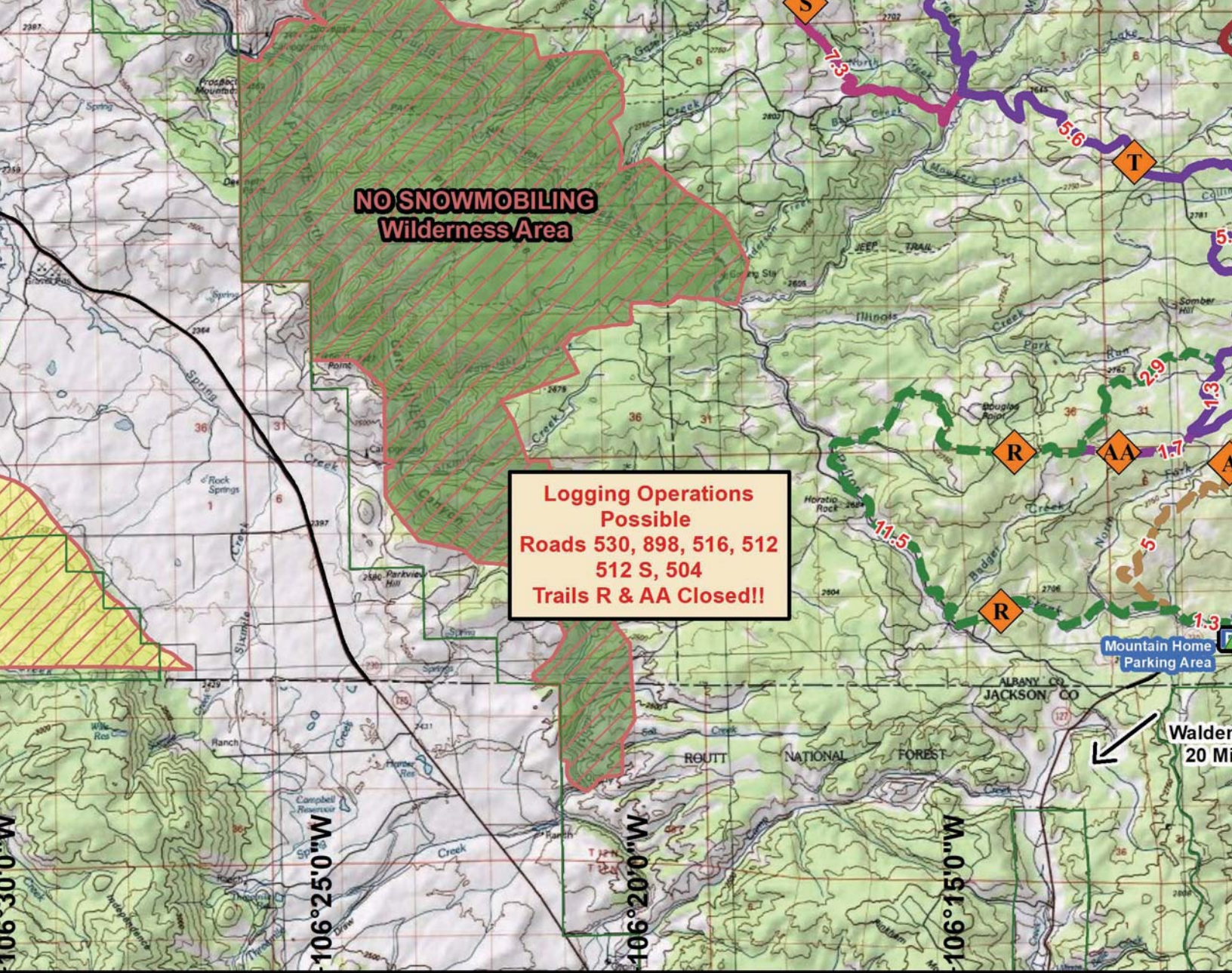
Walden
20 Mi

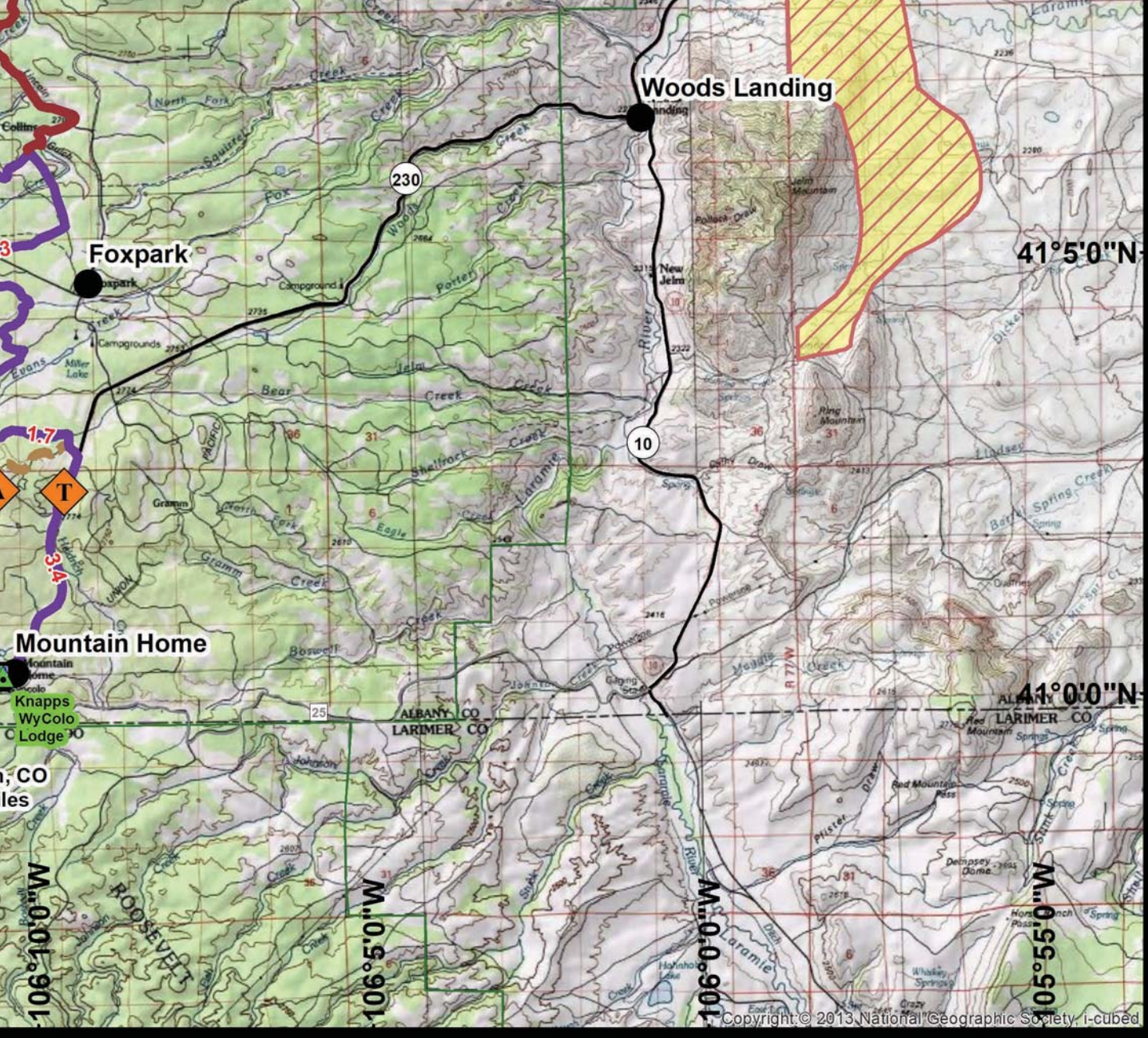
106°30'0"W

106°25'0"W

106°20'0"W

106°15'0"W





Copyright © 2013, National Geographic Society, I-cubed