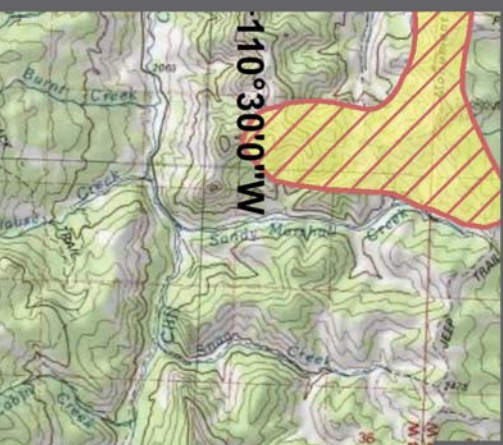


Murphy Creek Safety Shelter


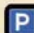



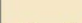


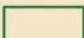
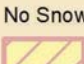


McCain Cabin

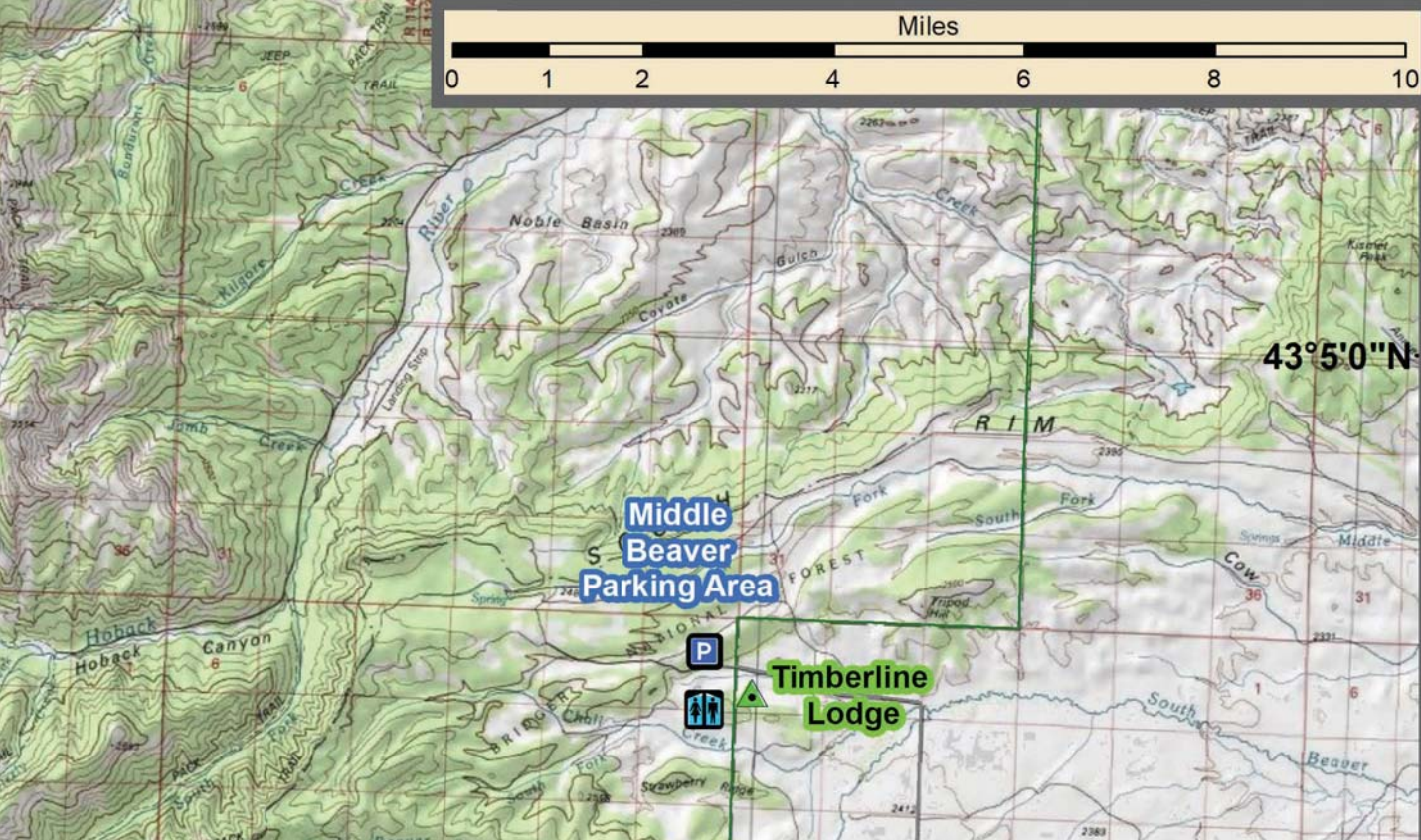
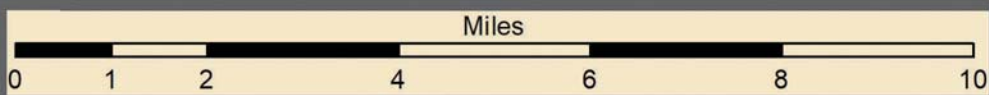
CAUTION: WATCH YOUR FUEL LEVEL





### Legend

-  On-Trail Business or other point
-  Parking Area
-  City / Town
-  Safety Shelter
-  Groomed Trail
-  Ungroomed Trail
-  State or Federal Highway
-  County Road
-  Forest Boundary
-  No Snowmobiling - Wildlife Winter Range
-  No Snowmobiling - Ski Area
-  Trail Length (Miles)



42°55'0"N

42°50'0"N

42°45'0"N

42°40'0"N

FIRESTONE RANGE



**NO SNOWMOBILING**  
Winter Range

Thayne

Afton

Willow Parking

T

5.6

Old Mill Cabins

239

89

237

238

236

126

123

STAR VALLEY

STAR VALLEY

STAR VALLEY

CARBOLU CO

IDAHO

**NO SNOWMOBILING**  
Winter Range

**Blind Bull**  
Safety Shelter

**Box Y**  
Guest Ranch

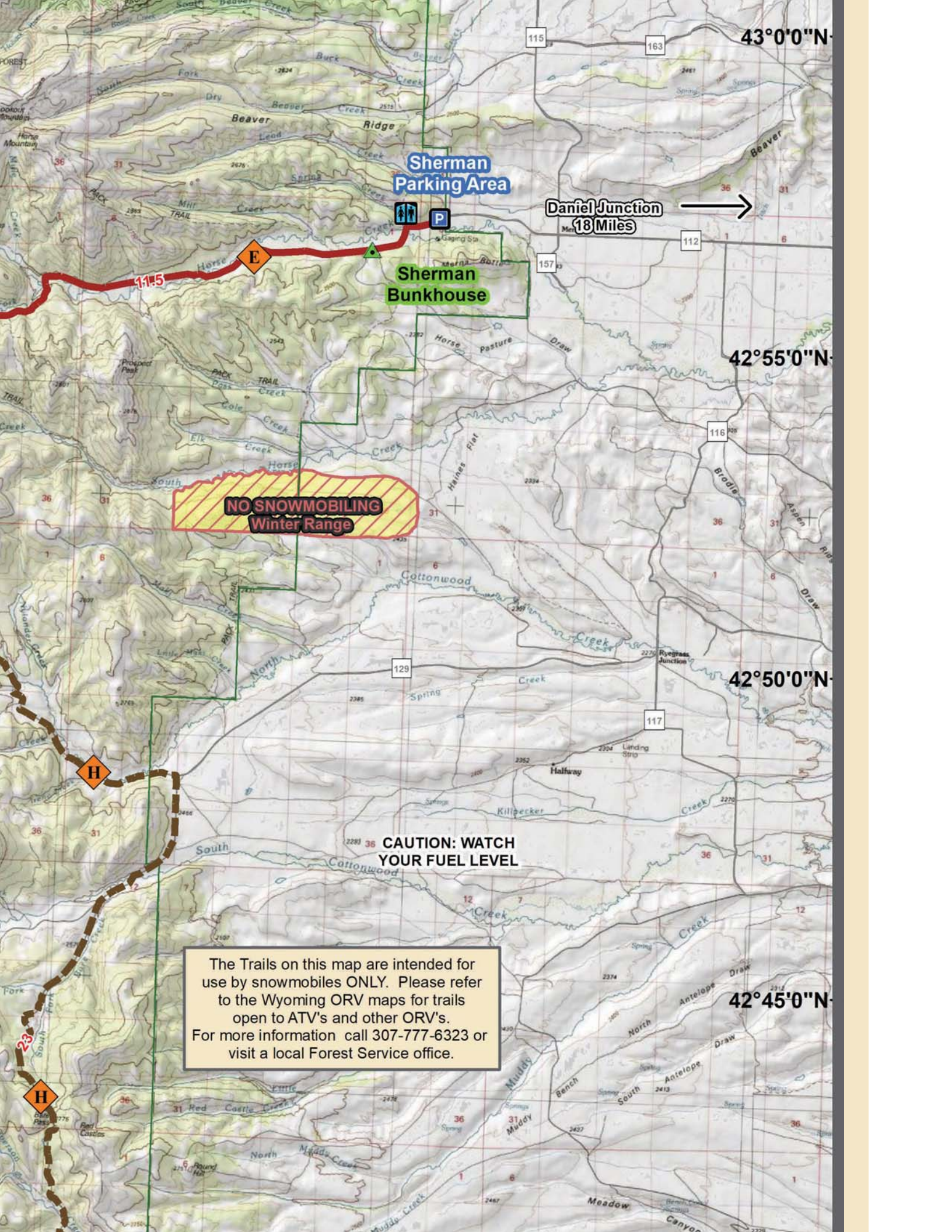
**Creek**  
g Area

**NO SNOWMOBILING**  
Winter Range

**CAUTION; WATCH FOR**  
**AVALANCHE AREAS**

**CAUTION; WATCH FOR**  
**AVALANCHE AREAS**





Sherman  
Parking Area

Daniel Junction  
18 Miles

Sherman  
Bunkhouse

**NO SNOWMOBILING**  
Winter Range

**CAUTION: WATCH  
YOUR FUEL LEVEL**

The Trails on this map are intended for use by snowmobiles ONLY. Please refer to the Wyoming ORV maps for trails open to ATV's and other ORV's. For more information call 307-777-6323 or visit a local Forest Service office.

43°0'0"N

42°55'0"N

42°50'0"N

42°45'0"N



